

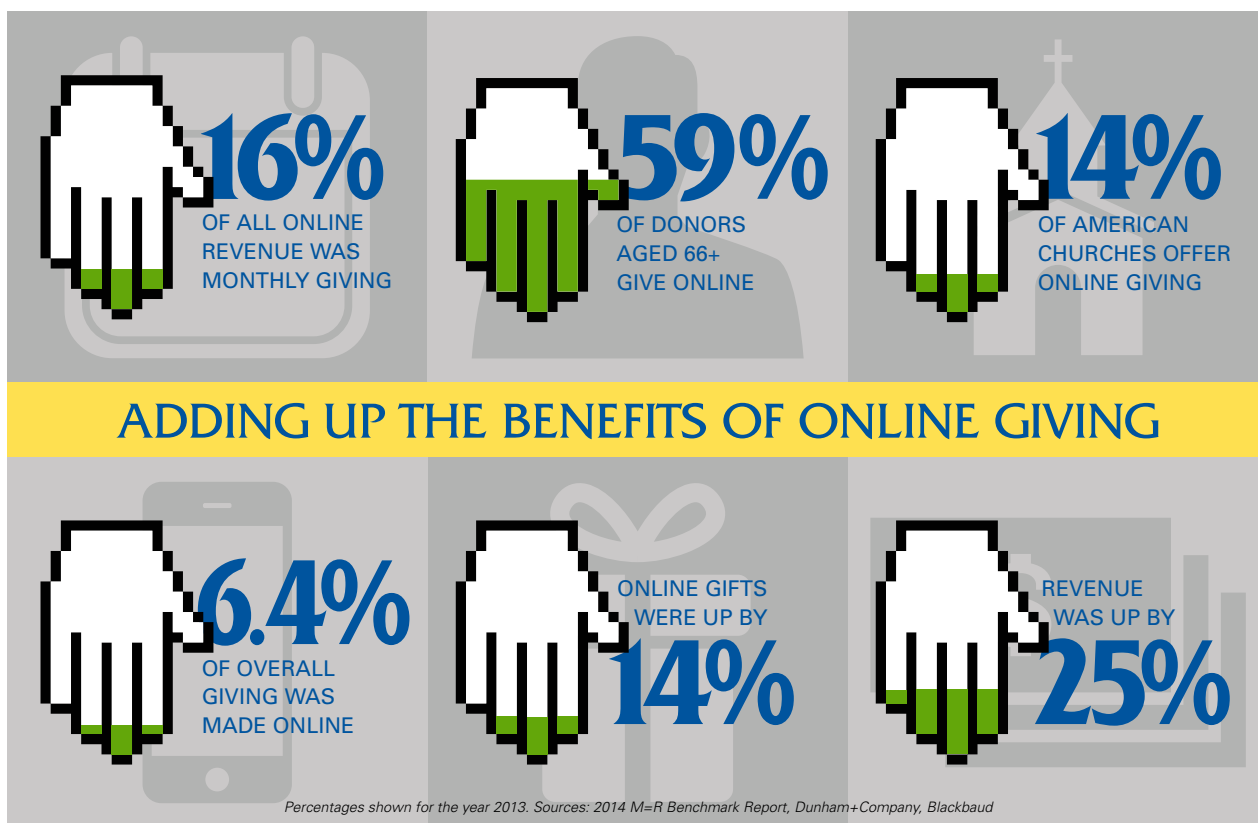
Mission Exchange

	Presbyterian Mission Exchange	National Church Solutions	PayPal	Just Give	ServiceU/ ACS Technologies	Easy Tithe
No Website required	✓	✓	✓	✓	✗	✗
Automatic ACH to church	✓	✓	✓	✗	✓	✓
Multiple accounts	✓	✓	✗	✓	✓	✓
Withdraw funds as needed	✓	✗	✓	✗	✗	✗
Reconcile gifts	✓	✓	✓	✓	✓	✓
Fees						
Set-up charge	No	No	No	No	\$199.95 (if there is no website)	No
Annual charge	No	No	No	No	No	No
Monthly charge	No	No	No	No	\$39.95	No
Transaction charge	1% per donation	No	\$.30 per donation	4.5% for all donations	No	No
Credit card/ Debit card charge	2.598% + \$.26	2.99%	2.20%	No	No	3% + \$.30
EFT/ACH charge	No	\$.25 + .5%	No	No	No	optional: .75% + \$.30 + \$6.00 month

Compare the Presbyterian Mission Exchange to comparable services.

With the **PRESBYTERIAN MISSION EXCHANGE** there is no need to negotiate credit card fees, purchase complicated software, reconcile gifts to bank account, or track gifts and make acknowledgements by hand. The Foundation allows unlimited funds and segregates gifts. Your ministry gains a partner - a talented group of faith-based, financial experts.

CONTACT US TODAY to learn how we can expand your gifts and make online stewardship the easy choice for your ministry and your community. For more information, find your regional Ministry Relations Officer at www.PresbyterianFoundation.org.



Make giving easy for your members!

Through the Presbyterian Mission Exchange, you can offer online donations and we'll take care of the rest.

- ✓ Add the GIVE NOW button to your website; include a link in your emails.
- ✓ Donors can set up recurring donations - so even when they can't make it to the regular service, they can participate in the offering.
- ✓ Set up multiple funds or campaigns for easy management.
- ✓ No set-up fee
- ✓ No annual or monthly fee
- ✓ Funds are available when you want them.
- ✓ Standards meet Payment Card Industry (PCI) data security standards for handling, storage and transmitting credit card information.

The Presbyterian Mission Exchange is offered through the Presbyterian Foundation, a trusted financial institution with over 200 years of service.